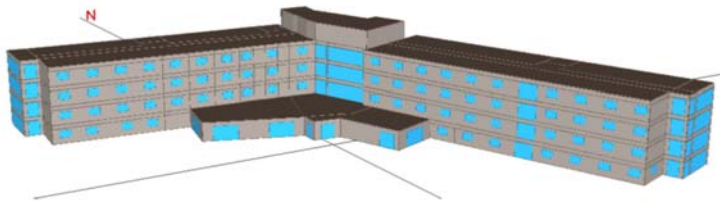


SUNY BROCKPORT

NEW DORMITORY



ROLE

Mechanical engineering and energy modeling

PROJECT ACHIEVEMENTS

- Design/Build Delivery
- Estimated Budget: \$19 million
- Actual Cost: TBD
- Schedule:
 - ◇ Design: June 2017
 - ◇ Construction: Summer 2018 est.

CONTACT

Contact: Carson Cantwell, Purcell Construction, (315) 782-1050

Pathfinder is providing mechanical engineering and energy modeling for the design of a new 250-bed dormitory at the College at Brockport that is being delivered as a design/build project. The 65000 sq. ft., four story building has been designed with a central open plan lobby, resident advisor housing, a multipurpose/community room and student amenities on the first floor, and student residence rooms on the second, third and fourth floors.

The HVAC design features a base valance (two-pipe) heating and cooling system for the student and RA residences, and a separate ventilation air system with air-to-air energy recovery. Each resident room will have individual temperature control. The hydronic systems will be operated with variable temperature, and variable flowrate for optimal energy efficiency.

Primary HVAC equipment includes

- three high efficiency condensing boilers, sized for operating with two boilers sized for 50% of peak demand, with a third boiler as backup.
- 130-ton air-cooled high efficiency chiller
- Two 100% outdoor air ventilators with energy recovery wheels.
- Common space on the ground floor is served by a VAV Air handling unit.
- The entrances and sidewalks immediately adjacent to the building are served by a radiant snow-melt system with snow detector.



PATHFINDER
ENGINEERS & ARCHITECTS

134 South Fitzhugh Street, Rochester, NY 14608-2268 585-325-6004 www.pathfinder-ea.com